



**Flanders**  
State of the Art

# Health in Horizon Europe

**Lieve Apers**  
**April 27, 2021**

**FLANDERS INNOVATION &  
ENTREPRENEURSHIP**



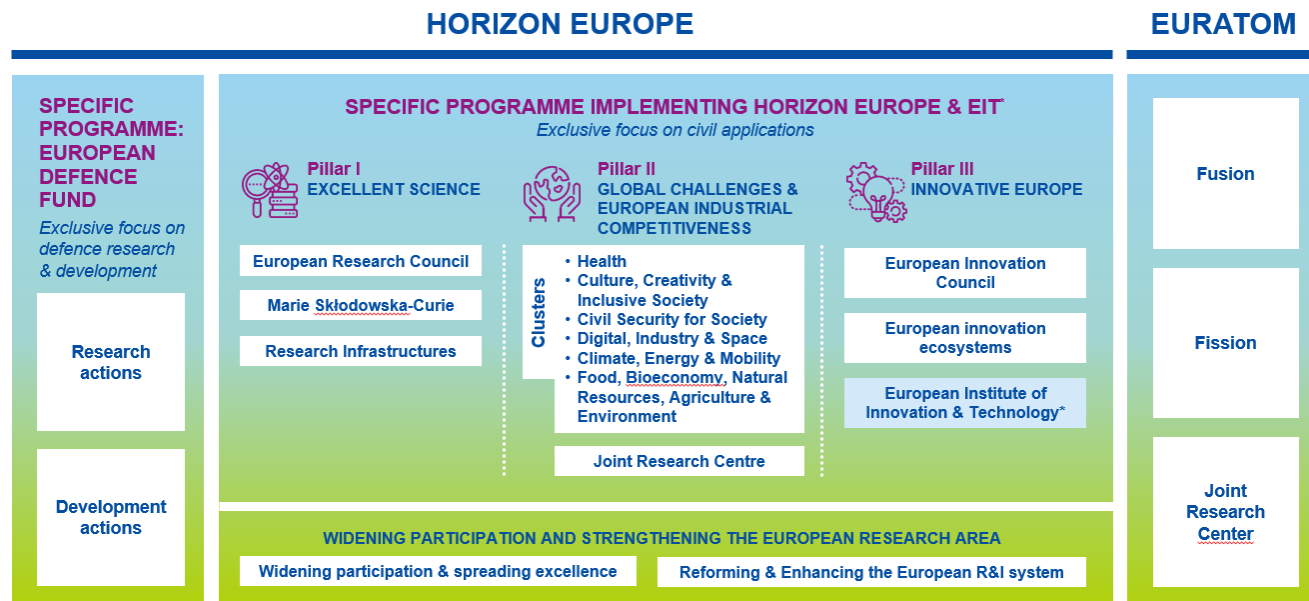
# Talking about



- Towards Health WP 2021 – 2022
  - State of play
  - Timeline
- Context Cluster 1 – Health (draft version)
  - Introduction
  - Pathway to impact
  - Destinations
- Candidate European Partnerships

# About Horizon Europe

Horizon Europe supports research and innovation through Work Programmes, which set out funding opportunities for research and innovation activities.



\* The European Institute of Innovation & Technology (EIT) is not part of the Specific Programme



FLANDERS INNOVATION &  
ENTREPRENEURSHIP

# Horizon Europe – State of play\*



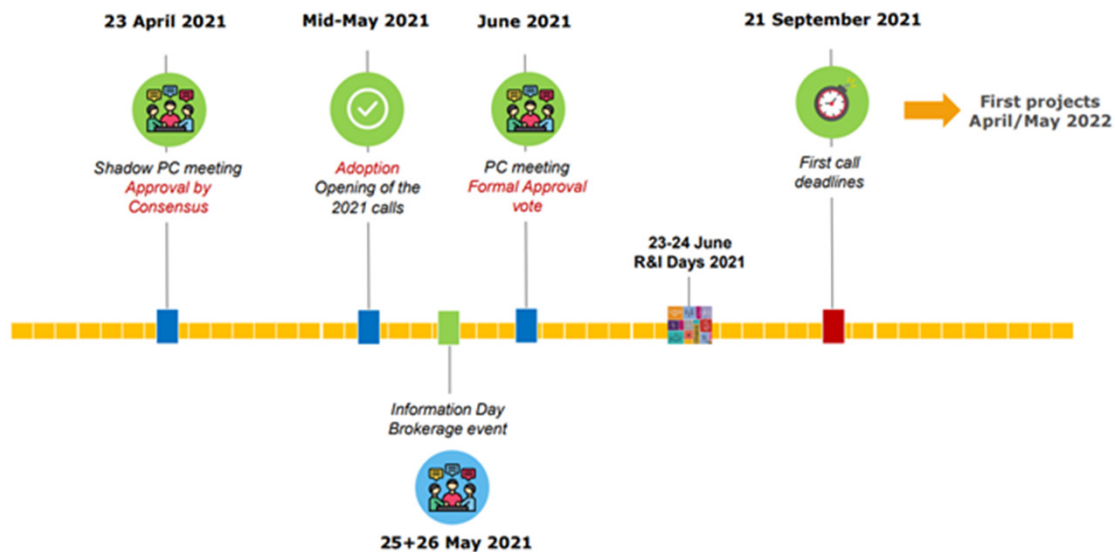
- ✓ **ERC WP 2021:** adopted 22 February
- ✓ **Strategic plan 2021-2024:** adopted 15 March
- ✓ **EIC WP 2021:** adopted 17 March
- ✓ **WP part 2021-2022 to address COVID-19 variants:** adopted 30 March
- ✓ **Main WP 2021-2022:** Interservice consultation closed 26 March
  
- ❖ **Main WP 2021-2022:** Consensus in Shadow PC configurations 20-27 April
- ❖ **Horizon Europe legal base:** Adoption by EP & Council end of April/Start May
- ❖ **Main WP 2021-2022 :** Adoption by EC Mid-May,  
formal votes in PC configurations in June 2021

\*Information of Shadow Health Configuration of the Horizon Europe Programme Committee of Friday April 23rd



**FLANDERS INNOVATION &  
ENTREPRENEURSHIP**

# Health WP 2021-2022 Adoption timeline\*



\*Information of Shadow Health Configuration of the Horizon Europe Programme Committee of Friday April 23rd



**FLANDERS INNOVATION &  
ENTREPRENEURSHIP**

# Key principles



**Your proposed work must be within the scope of a work programme topic**



**You need to demonstrate that your idea is ambitious and goes beyond the state of the art**



**Your scientific methodology must take into account interdisciplinarity, gender dimension and open science practices. It might not significantly harm the environment**



**You should show how your project could contribute to the outcomes and impacts described in the work programme (the pathway to impact)**



**You should describe the planned measures to maximise the impact of your project ('plan for the dissemination and exploitation including communication activities')**



**You should demonstrate the quality of your work plan, resources and participants**



**FLANDERS INNOVATION &  
ENTREPRENEURSHIP**

# Policy and horizontal considerations



Open Science across the programme



Gender dimension in R&I content



Pathway to impact



Measures to maximise impact



Do no significant harm principle (DNSH)



Artificial intelligence

These aspects must normally be considered in all Horizon Europe calls (unless explicitly mentioned in the topic description).

Specific calls may include other aspects to take into account.

**Future webinars focused on these specific aspects will come soon.**



**FLANDERS INNOVATION &  
ENTREPRENEURSHIP**

# Cluster 1: Health – WP 2021-2022\*

## ► Funding MFF & NGEU

- recovery of people and communities
- society more resilient
- health systems better prepared to any future public health emergency

## ► Recovery Plan:

- digital and green transitions
  - digitised health systems
  - competitive and secure data-economy
    - European Electronic Health Records
    - European Health Data Space.
  - increase the capacity of health care systems
  - personalised and effective health care
  - less resource wasting.

\*<https://ec.europa.eu/transparency/regexpert/index.cfm?do=groupDetail.groupMeetingDoc&docid=49106>



**FLANDERS INNOVATION &  
ENTREPRENEURSHIP**



# Cluster 1: Health – WP 2021-2022

- first climate-neutral continent by 2050
- zero pollution and zero waste.
  - delivery of health care,
  - design of health technologies
  - more sustainable manufacturing
- ▶ **Societal well-being, economic prosperity, environmental sustainability**
  - research and prospective users
- ▶ **European Health Union**
  - preparing and responding together to health crises
  - availability and affordability of medical innovative supplies
  - countries working together to improve prevention, treatment and aftercare

# Cluster 1: Health – WP 2021-2022

- ▶ **Accelerating the performance and boosting the use and impact of research and innovation**
  - complementary capacities: infrastructures and services,
  - complementary activities: EU4Health, Digital Europe Programme (DEP), InvestEU, European Regional Development Fund (ERDF), European Social Fund (ESF+) and Structural Reform Support Programme (SRSP)
  - skills and capacities in research or health systems,
  - take-up and use of scientific evidences, new technologies and best practices in health care and by health systems, industries and markets, at national or regional level.

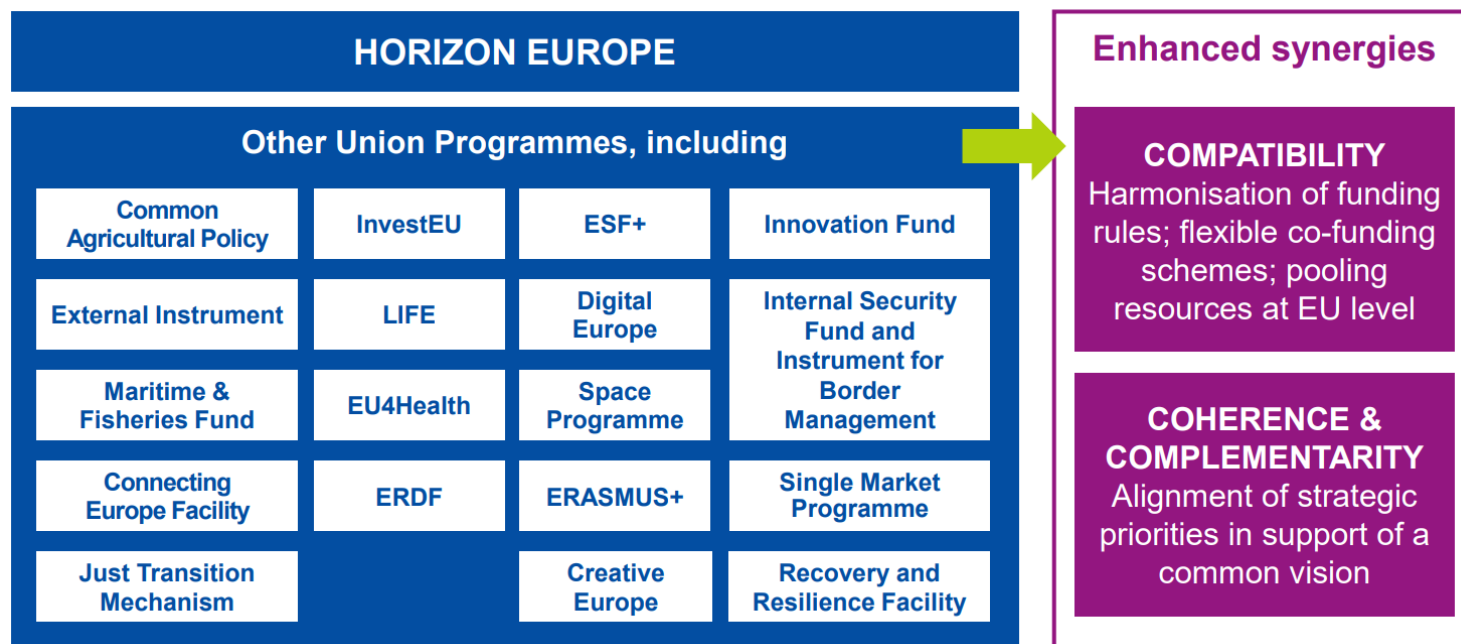


# Cluster 1: Health – WP 2021-2022

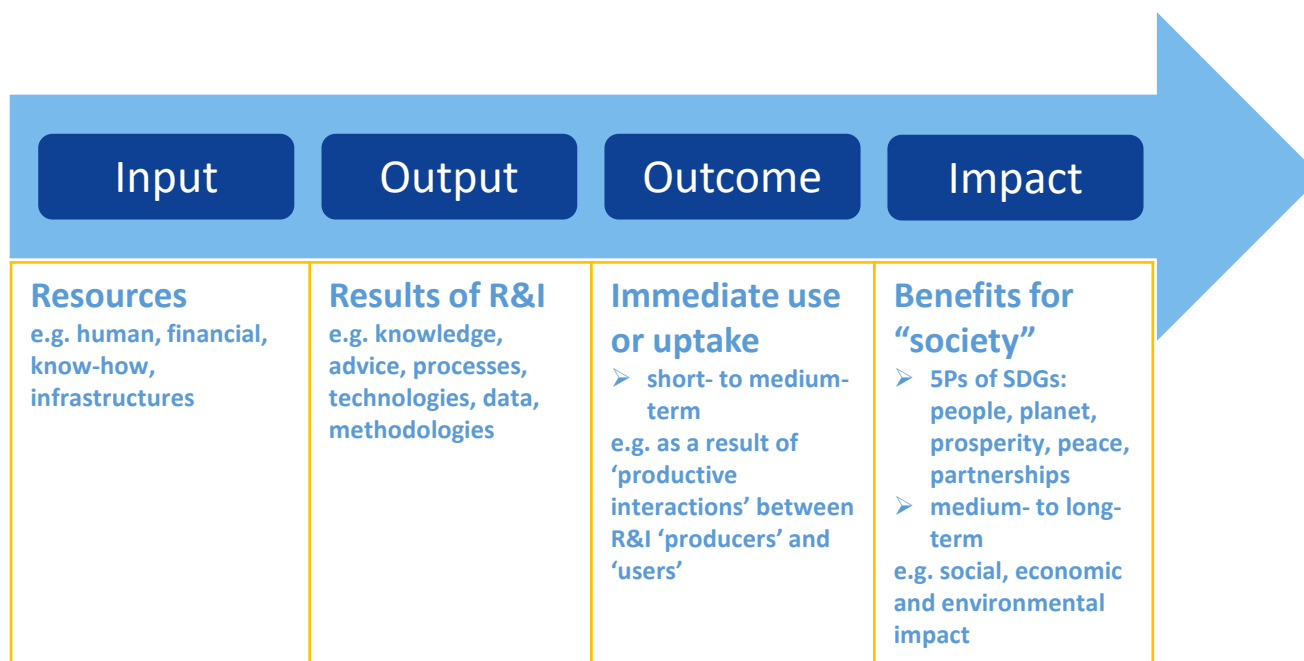
- ▶ **Cooperation between universities, scientific communities and industry, including small and medium enterprises, and citizens and their representatives**
  - bridging gaps between territories, generations and regional cultures, especially caring for the needs of the young in shaping Europe's future.
  - synergies with and where appropriate, possibilities for further funding from other R&I-relevant EU, national or regional programmes (such as ERDF, ESF+, JTF, EMFF, EAFRD and InvestEU), as well as private funds or financial instruments.
  - smart specialisation strategies.
- ▶ **RRF - Recovery and Resilience Facility**
  - tackling the economic and social impacts from the coronavirus crisis
  - supporting the green and digital transition



# Synergies



# Cluster 1: Health – Pathway to Impact



# Cluster 1: Health – WP 2021-2022



- ▶ **Two Strategic Orientations (KSOs)**
  - KSO-D: resilient, inclusive and democratic European society
  - KSO-A: promoting an open strategic autonomy by leading the development of key digital and enabling technologies, sectors and value chains
- ▶ **Four impact areas of the strategic plan:**
  - Good health and high-quality accessible healthcare;
  - A resilient EU prepared for emerging threats;
  - High quality digital services for all;
  - Competitive and secure data-economy
- ▶ **Six expected impacts are the destinations of this work programme**

# Cluster 1: Destinations

- ▶ D 1 Staying healthy
- ▶ D 2 Living and working in a health promoting environment
- ▶ D 3 Tackling diseases and reducing disease burden
- ▶ D 4 Ensuring access to innovative sustainable and high-quality health care
- ▶ D 5 Unlocking the full potential of new tools, technologies and digital solutions for a healthy society
- ▶ D 6 Maintaining an innovative, sustainable and globally competitive health-related industry

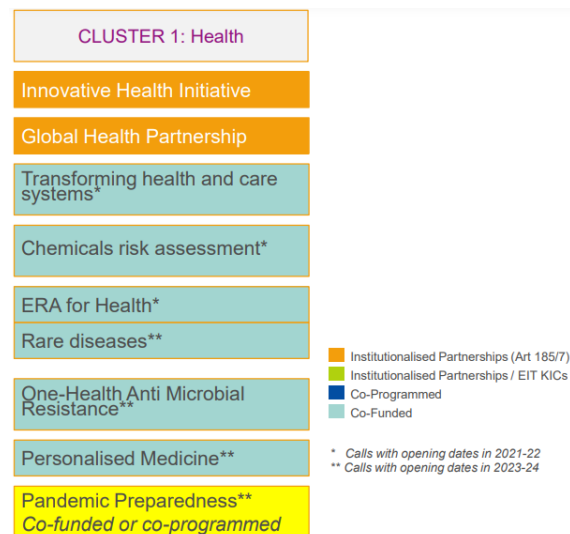
# Cluster 1: Candidate European Partnerships

## ► Partnerships

→ Strategic Plan identifies 49 co-programmed and co-funded partnerships:

- public-public
- public-private
- global initiatives

→ EC proposals for 10 institutionalised partnerships based on Art 185/187 (23 Feb 2021 - [link](https://ec.europa.eu/info/horizon-europe/european-partnerships-horizon-europe/candidates-european-partnerships-health_en))



[https://ec.europa.eu/info/horizon-europe/european-partnerships-horizon-europe/candidates-european-partnerships-health\\_en](https://ec.europa.eu/info/horizon-europe/european-partnerships-horizon-europe/candidates-european-partnerships-health_en)



FLANDERS INNOVATION &  
ENTREPRENEURSHIP



# Contact



[lieve.apers@vlaio.be](mailto:lieve.apers@vlaio.be)

[www.NCPFlanders.be](http://www.NCPFlanders.be)